

SPECIFICATIONS

General	BP515	BP565
Frequency Range	UHF: 400-470 MHz; VHF: 136-174 MHz	
Channel Capacity	64	128
Zone Capacity	4	8
Channels Per Zone	16	
Channel Spacing	12.5kHz/20kHz/25kHz	
Operating Voltage	7.4V	
Battery	1500mAh (Standard); 2000mAh (Optional)	
Battery Life (5/5/90 Duty Cycle, High TX Power)	Analog: 12h (1500mAh), 16h (2000mAh) Digital: 16h (1500mAh), 22h (2000mAh)	
Frequency Stability	±0.5ppm	
Antenna Impedance	50Ω	
Weight (with antenna & battery)	210g ± 5%g	230g ± 5%g
Dimensions (H x W x D)	115 X 54.5 X 29.5mm	
BT (optional)	BT 5.0 BLE + EDR	
Display	N/A	1.77 inch TFT
Receiver		
Sensitivity	Digital: 0.18μV / BER 5% Analog: 0.18μV (1.2dB SINAD)	
Adjacent Channel Selectivity	TIA-603: 60dB@12.5kHz; 70dB@20/25kHz ETSI: 60dB@12.5kHz; 70dB@20/25kHz	
Intermodulation	TIA-603: 70dB@12.5/20/25kHz ETSI: 65dB@12.5/20/25kHz	
Spurious Response Rejection	TIA-603: 70dB@12.5/20/25kHz ETSI: 70dB@12.5/20/25kHz	
Blocking	TIA-603: 80dB ETSI: 84dB	
Hum and Noise	40dB@12.5kHz; 43dB@20kHz; 45dB@25kHz	
Rated Audio Power Output	1W	
Rated Audio Distortion	≤ 3%	
Audio Response	+1 to -3dB	
Conducted Spurious Emission	≤ -57dBm	
Transmitter		
RF Power Output	VHF: 5W/1W; UHF: 4W/1W	
FM Modulation	11K0F3E@12.5kHz; 14K0F3E@20kHz; 16K0F3E@25kHz	
4FSK Digital Modulation	12.5kHz Data Only; 7K60FXD 12.5kHz Data and Voice; 7K60FXW	
Conducted/Radiated Emission	-36dBm < 1GHz; -30dBm > 1GHz	
Modulation Limiting	±2.5kHz@12.5kHz; ±4.0kHz@20kHz; ±5.0kHz@25kHz	
FM Hum & Noise	40dB@12.5kHz; 43dB@20kHz; 45dB@25kHz	
Adjacent Channel Power	60dB@12.5kHz; 70dB@20/25kHz	
Audio Response	+1 to -3dB	
Audio Distortion	≤ 3%	
Digital Vocoder Type	AMBE+2™	
Environmental		
Operating Temperature	-30°C ~ +60°C (Battery requires -20°C minimal operating temperature)	
Storage Temperature	-40°C ~ +85°C	
ESD	IEC 61000-4-2 (Level 4) ±8kV (contact); ±15kV (air)	
Dust and Water Intrusion	IEC60529-IP54 (IP67 optional)	
Humidity	MIL-STD-810 G	
Shock and Vibration	MIL-STD-810 G	

ACCESSORIES

STANDARD ACCESSORIES:



Antenna



Belt Clip



Battery



MUC Rapid-rate
Charger



Power Adapter



Strap

OPTIONAL ACCESSORIES:



Adapter (USB)



Data cable
PC143



C-Earset
EHN35



C-Earset
EHN36



Programming cable
PC155



Battery
2000mAh BL2021

Hytera

Hytera Communications Europe

939 Yeovil Road, Slough, Berkshire, SL1 4NH

info@hytera-europe.com | www.hytera-europe.com



[www.facebook.com/
HyteraEurope](https://www.facebook.com/HyteraEurope)



[www.linkedin.com/company/hytera-
communications-uk](https://www.linkedin.com/company/hytera-communications-uk)



[www.instagram.com/
Hytera.Europe](https://www.instagram.com/Hytera.Europe)



Subscribe on YouTube

Hytera reserves the right to modify the product design and the specifications. In case of a printing error, Hytera does not accept any liability. All specifications are subject to change without notice.

Hytera

ENHANCED BUSINESS TWO-WAY RADIO

BP515/BP565

STAY CONNECTED, STAY PRODUCTIVE



BP515

BP565

www.hytera-europe.com

FEATURES TO KEEP YOU CONNECTED



DIGITAL AND ANALOG COMPATIBLE

Supports both digital and analog modes, compatible with your existing digital and analog systems and terminals. Powerful digital features like priority interrupt, basic encryption, text messaging, roaming will enhance your business service. The BP5 series has extended range in class and features 64/128 channels, making group communication more flexible.



STURDY BODY

Wear-resistant and scratch-resistance body, standard IP54 dustproof and waterproof; large key design, flexible operation even with gloves.



DESIGNS FOR EASE OF USE



CLEAR AND LOUD AUDIO

Light and compact with a built-in intelligent noise reduction algorithm, to eliminate unwanted background noise, supports three-level noise reduction adjustment so even if the other party is speaking in a noisy environment, you can still listen clearly. 3W high-power loudspeaker with a loudness of up to 90dBA, the sound is clear and loud even in noisy and other harsh conditions; good howling suppression ability, even if many people use the walkie-talkie in the same room, there will be no annoying howling sound.



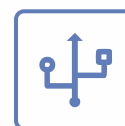
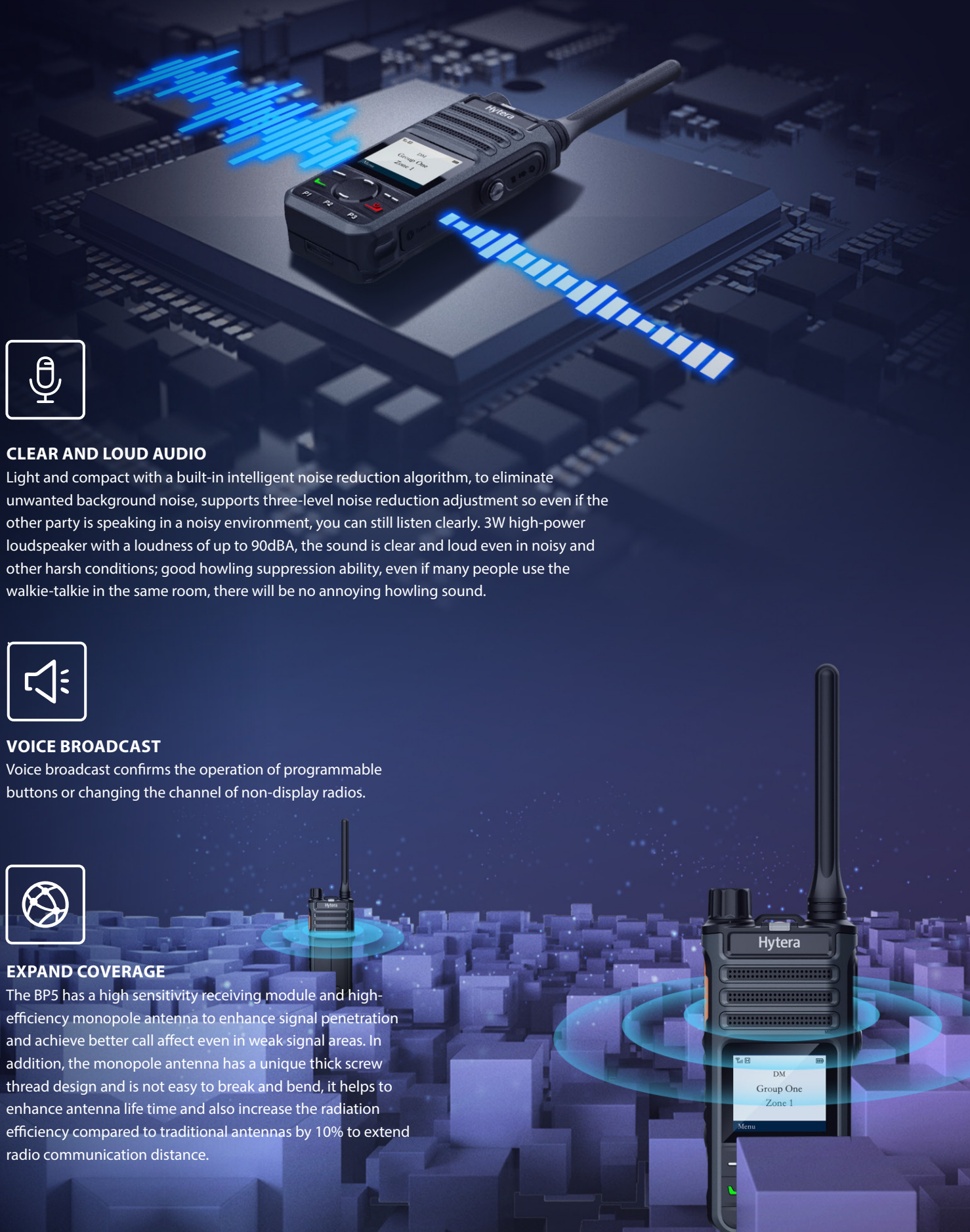
VOICE BROADCAST

Voice broadcast confirms the operation of programmable buttons or changing the channel of non-display radios.



EXPAND COVERAGE

The BP5 has a high sensitivity receiving module and high-efficiency monopole antenna to enhance signal penetration and achieve better call affect even in weak signal areas. In addition, the monopole antenna has a unique thick screw thread design and is not easy to break and bend, it helps to enhance antenna life time and also increase the radiation efficiency compared to traditional antennas by 10% to extend radio communication distance.



Digital and analog compatible

Supports both digital and analog modes, compatible with your existing digital and analog systems and terminals. Powerful digital features like priority interrupt, basic encryption, text messaging and roaming will enhance your business service. The BP5 series has extended range in class and feature 64/128 channels, making group communication more flexible.



High energy battery

The BP5 series uses international well-known brand batteries with a long service life. It still has 80% of the initial battery capacity after 500 charge-discharge cycles. The radio can be charged from 0% to 100% in only 1.8 hours. After charging for 1 hour it can work for 10 hours. A 10W rapid-rate charger ensures safe and reliable charging which can work in harsh environments such as high or low temperatures.



Delicate appearance

Lightweight design making it lighter and thinner than similar products, easy to carry and use: Two-colour injection moulding making it highly recognisable and able to suit the user's working environment and dressing habits. The colour can be flexibly customised based on your requirement.



Trustworthy quality

Hytera has the world's largest professional communication production line, and manufactures each walkie-talkie in accordance with Industry 4.0 standards. Our strict supplier management system certification ensures each component meets the quality control requirements to ensure the consistency of product quality.

